



bluecradle

First Annual Report 2020

Pūrongo-ā- tau Tuatahi

FYE 31 March 2021

Blue Cradle Foundation

CC57834



ANNUAL REPORT AND FINANCIAL STATEMENTS
FOR THE FIRST YEAR OF OPERATION ENDED 31ST MARCH 2021

The Blue Cradle Foundation is a non-profit organisation incorporated on June 4th, 2020 and based in Ōtautahi/Christchurch. It is an Aotearoa New Zealand registered Charitable Trust #CC57834.

This Annual Report was presented to the Annual General Meeting (AGM) of the Blue Cradle Foundation held by video conference on December 15th 2021.

Published by the Blue Cradle Foundation

Text and images: Blue Cradle Foundation, Julie Chandelier, and Jade Cavalcante

Design by Erin Stewart, editing by Natasha S. McIntosh

PO Box 21045

Edgeware

Christchurch 8143

Aotearoa New Zealand

contact@bluecradle.org

+64 (0)27 239 2298

www.bluecradle.org

Contents Rārangi ūpoko

The origin story of Blue Cradle Tō mātou ōrokohanga	6
Our Board of Trustees Ngā Kaitiaki i te Poari	8
The (very first!) team Tō mātou tīma tuatahi	10
Chairman/CEO's message He kōrero nā te Tumuaki	11
Our work Tā mātou mahi	14
Pilot project: Little blue penguins/kororā Tō mātou kaupapa whakatauirā: kororā	16
Other activities in our first year Ētahi atu mahi o te tau i pahure	18
What's to come Ngā mahi e heke mai nei	20
Our Supporters Ngā kaitautoko	21
Financial Statements Ngā tauākī pūtea	22



Tēnā koutou katoa i ngā tini āhuatanga o te wā

He toru ngā whāinga mō tō mātou kaupapa. Tuatahi, e kōkiri ana mātou i ngā mahi mē ngā kaupapa e pā ana ki te whakaoratanga o tō tātou moana, mē ōna pūnaha hauropi katoa.

Tuarua, e tautoko ana mātou i ngā whānau, hapū, iwi, mē ngā hapori e mahi ana ki te whakapai i te oranga o te moana.

Tuatoru, ko te whakapakari i ngā kaupapa akoranga ē pā ana ki te moana, ahakoa mātauranga Māori, ahakoa Pūtaiao Pākehā.

Kei te tino harikoa mātou ki te whakatakoto i tēnei pūrongo-a-tau ki mua a koutou. He maha ngā wero mē ngā āwangawanga i roto i tēnei tau kua pahure, engari, e poho kererū ana mātou mō te mahi kua mahia.

Pāpaki kau ana ngā tai o mihi ki a koutou e ngā tini, e ngā mano e arotake nei ki ngā hāerere o te wā, He waka eke noa!

As the tide of greetings ebbs and flows we collectively recognise that the waka we paddle is shared by many.

The origin story of Blue Cradle

Tō mātou ōroko hanga

Blue Cradle was born in April 2020 during the Covid-19 lockdown in Aotearoa New Zealand.

'The Blue Cradle' was initially a blue economy focused documentary series set in the cradle of biodiversity, the coral triangle region. When the pandemic

James founded the Blue Cradle nonprofit with positive values of sustainability, courage and a team spirit, working collaboratively using technology and



happened, Founding Director James Nikitine instead made the decision to incorporate a Charitable Trust. It was a decisive moment which meant he would stay in New Zealand during the lockdown instead of going back to Europe.

Setting up an organisation came from the realisation that something different needed to be done to address the gaps in the ocean research and education space in Aotearoa New Zealand, as well as the greater South Pacific region. Inspired by Tara Expeditions and Jacques Cousteau,

Indigenous knowledge.

We are the ocean, and the ocean is us. The ocean covers 71% of the planet's surface and enables the conditions for life. Unfortunately the ocean is suffering major consequences from our anthropogenic actions, causing climate and biodiversity crises. If the ocean's health declines, so will ours.

Our goal is to reframe the ocean as a fundamental solution, and place it at the centre of our collective response.

Blue Cradle has three main programmes:

- » **RESEARCH** - A coastal & offshore focus, aiming to address complex issues of ecosystem resilience, anthropogenic pressures, and marine biodiversity characterization.
- » **EDUCATION** - Promote ocean literacy across schools, Universities and the broader public.
- » **DIGITAL OUTREACH** - Produce short and long form content for a wide range of audiences worldwide.

Blue Cradle has three main objectives:

- » Promote the conservation and regeneration of the ocean's ecosystems and species.
- » Support communities working on ocean health impact solutions in Aotearoa New Zealand and beyond.
- » Increase ocean literacy, marine science and conservation education and ocean science for sustainable development.

Through research, education, and communicating these solutions, Blue Cradle is participating in the scaling of the sustainable, regenerative blue economy.

At the start of the UN Decade of Ocean Science for Sustainable Development (2021-2030), we know now is the time to seize this once in a lifetime opportunity to invest in ocean science and research. Only then can we truly secure a safe and healthy future for the next generations.



Our Board of Trustees

Ngā Kaitiaki i te Poari



James Nikitine – Director & Chair

James Nikitine grew up on the shores of Lake Léman, in France. Of Russian and British descent, he was influenced early by the documentaries of Jacques Cousteau, the films of Luc Besson and James Cameron. He subsequently chose a film education path, that he then complemented through tourism, ocean education and marine science. James holds a Masters of Science in Marine Systems and Policies from the

University of Edinburgh (UK), and a Bachelor of Arts in Film from the University of Exeter (UK). As a marine scientist, consultant and filmmaker, his work in the last decade has been to communicate marine science and policy issues, working with many organisations including the International Union for Conservation of Nature and UNESCO.

James founded Blue Cradle during the Covid-19 lockdown between April and June 2020.



Geoffroy Lamarche

Geoffroy Lamarche graduated with a PhD from the University of Grenoble in 1987. In 1992, he joined the French Institut de Recherche pour le Développement (IRD) in Nice, France to work on the first marine mapping initiative of the New Zealand continental shelf and slope using multibeam technology. Geoffroy joined NIWA in 1998 where he led the Marine Geological Processes and Resources programme. In

addition, he was Director for the South and West Pacific Regional Data Assembly and Coordination Centre for the Nippon Foundation – GEBCO Seabed 2030 project. Geoffroy has been chief scientist on several geophysical voyages on New Zealand flagship R.V. Tangaroa and other foreign vessels. In 2015, he was awarded a French National Order of Merit for his work toward strengthening France-New Zealand collaboration in research science.



Jocelyn Papprell

Jocelyn Papprell is an educator for sustainability and an advocate for youth voices. She worked as a teacher for 25 years before 'jumping ship' to commit to developing educational opportunities beyond the school gate. She now works part-time for the Canterbury Regional Council (Environment Canterbury) as a Youth Engagement and Education Advisor and is also a contract facilitator for the

Untouched World Foundation. Beyond work, she gives her time to various environmental organisations and her local community association.



Liam Koka'ua

Liam Kokaua is a Māori of Rarotonga (Ngāti Arera tribe) in the Cook Islands. Through whakapapa Liam also has ties to the atolls of Palmerston, Manihiki, Rakahanga and Tongareva, as well as the islands of Mangaia and Tahiti. Currently his life is shared between Aotearoa New Zealand and Rarotonga. Liam was a member of the Nia Tero Indigenous Leadership Fellows program, and he has recently worked for a local

environmental NGO, Te Ipukarea Society on Rarotonga. Liam is a former executive member of the Cook Islands Voyaging Society (Vaka Marumaru Atua) formerly sat on the Marae Moana (Cook Islands Marine Park) Target Advisory Group. In 2019, he completed a Masters of Indigenous Studies at the University of Auckland.



Katherine Short

Katherine has a Bachelor of Ecology and a Masters of Conservation Science. She has spent nearly seventeen years with WWF, including seven at WWF International. She was also an emerging Director for WWF New Zealand in 2019/2020. Katherine co-created a sustainability consultancy, Terra Moana, which advises a range of clients including Moana New Zealand, the largest Māori owned seafood

company and designed the Aotearoa National Oceans Centre and Aquarium in 2019 for Napier City Council. Katherine is a Fellow of Leadership New Zealand and a trained Regeneration Practitioner. She has completed levels 3/4 Te Reo Māori. She lives in Ōtautahi Christchurch with her partner.

The (very first!) team *Tō mātou tīma tuatahi*

Below is the core team that volunteered with Blue Cradle during its very first months of operation during April 2020-March 2021. We are very grateful for their dedicated support.



Emma

Since graduating with a Bachelor of Science with Zoology (Hons) from the University of Edinburgh, Emma has been working on ecotourism boats in Aotearoa and Canada, sharing her passion for the ocean and its inhabitants with others. She recently completed her Masters in Wildlife Biology and Conservation where her research project looked into microplastics pollution in the Avon-Heathcote Estuary/Ihutai. She believes science is for everyone and resources that allow people to learn about the ocean and how to protect it should be readily available.



Peter

Peter Wells is a Seattle native with a background in arts, anthropology, and permaculture design. He specialises in public food forests and has spent the last 3 years creating the Ōtākaro Orchard Hub for local food in central Christchurch. Alongside Blue Cradle, he assists with projects in the Ōtākaro Avon River Corridor, and governance for the Soil & Health Association and Kiwiburn. He holds a Bachelor of Arts in Anthropology from Goucher College and is an IUCN member.

Blue Cradle would also like to thank all our other spontaneous volunteers, including Emily, Julie, Jade, Vivian, Kerepeti and Jordan. Extended thanks to Ben Parker, former and founding Board Member of Blue Cradle, and continued friend of our organisation. Finally, we would like to thank Christopher Reid and Audrey Reisdorffer for their support in the launching phase of Blue Cradle. They were instrumental in the initial brainstorming of the logo, branding and skeleton of 'The Blue Cradle' (series) that would soon become Blue Cradle (the organisation).



Ben Parker

Chairman/CEO's message *He kōrero nā te Tumuaki*

Kia ora!

What a year 2020 has been. Our expectation in the ocean community was that 2020 was going to be the 'super year for the ocean', a moment where several international conferences were going to shape the next decade for the ocean, with very high stakes and ambition, positive momentum around marine conservation and ocean science for sustainable development.

It was not meant to happen. As we know, the global Covid-19 pandemic manifested at the start of the year, and as we write today, over 5 million people have died as a result, with real numbers likely exceeding that figure. With every crisis comes an opportunity, however, and at Blue Cradle our lockdown inception story came from being able to pivot and make bold decisions towards building a better future. It certainly holds true that in some decisive moments, the best thing to do is to dream big and to follow one's gut feeling. Sometimes, things need to be done a bit differently.

In its inaugural year, Blue Cradle had to face many challenges. As every new organisation very quickly realises, it must be able to make a compromise between

its ambitious objectives and its current abilities, both in financial terms but also in its human resources. While individual action was essential to put forward the purpose, branding, and vision, Blue Cradle was crucially able to move forward and bring others on the journey as well.

Funders, volunteers, sponsors and the community have supported us along the way and we are very grateful. As everyone is still feeling the impacts of the pandemic we have been able to pull through thanks to the amazing response we received.

This support has enabled the June 2020 - March 2021 period to become a fertile ground for the following months as the period after April 21 (year 2) has been quite spectacular. As we write these words (apologies for this belated first annual report), our 2nd annual report is already in preparation for a June release and will showcase how we delivered on our initial promise. Perhaps even more.

Going back to the subject of this first, launch year, I can say our most meaningful outcome has well and truly been being able to form several very important and unique community partnerships. Pōhutu Penguins, the International Antarctic

Centre, Bush Farm Education, Orbica Ltd and the Student Volunteer Army were our very first partners working with us on penguin monitoring around Banks Peninsula. We also developed a relationship with Te Hāpu o Ngāti Wheke at Rāpaki, where our common goals of ocean health and human health were recognised and celebrated.

Our first year sparked other partnerships with Lyttelton Port Company, the Christchurch City Council and Banks Peninsula Conservation Trust, as well as with many others who welcomed our presence in the community. I'm thinking of Steven Moe at Parry Field Lawyers, who literally brought us to life, of Kerepeti at Kororātahi Creative who partnered with us on our first documentary film, of Black Cat Cruises who invited us on board their ship in Whakaraupō for an awesome day of ocean learning. Others in our extended whanāu include XCHC - the Exchange, the team at Happen Films, Edmund Hillary Fellow Joey Krug, and the Hillary Institute's Mark Prain.

We are very grateful for your friendship, support and welcome. Finally we started a relationship with The Cawthron Institute

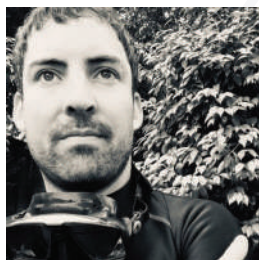
and ESR, paving the way for an exciting second year of expeditions and activities.

But while welcoming a new member in the community is one thing, financial support to keep them alive is another. And so without Environment Canterbury and the Rātā Foundation, we would not have survived the first year. Thank you so much for your financial support.

Last but not least, thank you to our Trustees and volunteers. Without them Blue Cradle would not exist. Thank you for supporting us with my crazy ideas and for taking a deep plunge in the ocean. Finally, thank you to our sponsors, Cassels, Grove Mill, Tourism New Zealand and Tūranga Library.

If you liked what you read in this year's report, wait until you read our second annual report next year. It will blow your mind.

For the ocean, its ecosystems, species, and people.



Our work *Tā mātou mahi*

People

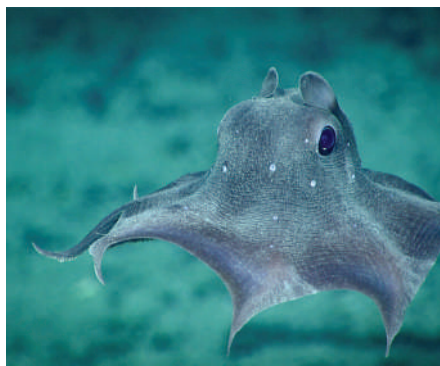
Filling an important gap for communities in Aotearoa New Zealand and the South Pacific region, Blue Cradle works in partnership with multiple stakeholders to facilitate ocean research and education. This collaboration enables the collection of oceanographic, biological or geological data while also educating, enhancing ocean literacy and documenting its story along the way.



Solutions

By focusing on a wide range of ocean science and conservation projects, we are able to bring junior and senior scientists together to solve the most pressing issues of pollution and climate change impacts on the ocean and biodiversity. We also promote the work of innovative startups, and strive to partner with a broad range of scientific institutions, research groups,

and nonprofits who work with technology and/or Indigenous knowledge to solve our biggest challenges.



Stories

One of Blue Cradle's educational activities is documentary production. We tell the stories of the people working on ocean solutions. Our goal is to create an ongoing series using an adventurous style with clear ocean literacy enhancement outcomes. We strive to bring ocean science stories to broad and diverse audiences, making it more accessible and inspiring them to take action.



Vessel Development Programme

Currently the South Pacific region does not have a research vessel that provides ongoing ocean exploration. Blue Cradle has a long-term vision of operating a purpose-built research vessel



with the capacity to monitor changes to ecosystems and biodiversity. Our goal is to outfit a low-cost, liveaboard vessel which operates quietly with low emissions. With dry and wet laboratories, it would be fully equipped with modern scientific equipment. Our aim is to lease, acquire, refit or build our own Blue Cradle research vessel.

For the moment, we find fit-for-purpose, private or commercial ships able to accommodate scientific research expeditions. Through sponsorship or our project budget, we are able to provide the means for data collection, monitoring and educational activities from vessels.

We work to build significant partnerships, lead in international ocean research and marine conservation, and contribute to the UN Decade of Ocean Science for Sustainable Development (2021-2030).

Our Research Areas

Plastic Pollution | Biosecurity | Climate Change | Biodiversity



Pilot project: Little blue penguins/kororā Tō mātou kaupapa whakatauirā: kororā

When Blue Cradle began, programmes and activities went in many directions. With high ambition, and perhaps not knowing where to start, there was a lot of work and a strong need for focus.

Fortunately, as our existence became known, projects came to us. Kevin and Averil Parthonnaud of Pōhatu Penguins in Akaroa reached out. We started to collaborate on little penguin monitoring. By helping to design a penguin survey, Blue Cradle supported what became a widespread citizen science effort held during October and November 2020. A Banks Peninsula-wide population assessment, it involved over 60 volunteers working with the local community.



Kevin Parthonnaud

The white-flipped penguins (*Eudyptula minor albosignata*) are an endemic species only found in Banks Peninsula and Motunau Island. Although initially thought to be a sub-species of the little blue penguin / kororā, they are in fact a colour

morph. The last population survey was conducted in 2000/2001 and 2001/2002 and counted 68 colonies, with 2112 nests (1650 on Motunau Island), totaling ~10,460 birds. Latest population data accounts for 74 nesting sites, with regular surveys conducted at Pohatū/Flea Bay Marine Reserve.



In partnership with GIS company Orbica, Blue Cradle and Pōhatu worked on the development of a purpose-built web app - a system which enables the data collected to be centralised in one easy-to-use online portal. This database was then consolidated with the 2000/2001 data acquired by Dr. Chris Challies and Robin Burleigh, former survey leads. Their survey gave us historical data which enabled a comparative analysis to our more detailed 2020/21 data. Ultimately, this work gives us a good snapshot of the kororā population over time around the Peninsula, and as a key indicator species it provides a good idea of the health of the marine environment.

A mid-survey report was published in September 2021 in collaboration with Pōhatu Penguins while the remaining sites were surveyed in October 2021. In future years, Blue Cradle and Pōhatu - now formed as a conservation trust - are hoping to collaborate with new partners, including local iwi and DOC, to monitor and track kororā at sea using GPS sensors.

Focusing on outreach, Blue Cradle also produced a documentary in partnership with Kororātahi Creative, co-directing with Kerepeti Paraone from Te Hāpū o Ngāti Wheke, Rāpaki in Whakaraupō. This 30-minute documentary promotes the conservation of little penguins. It tells the unique story of the Helps family at Pōhatu and how the people of Banks Peninsula



are connected to this unique species. The film was premiered during Seaweed in March 2021 at the International Antarctic Centre with 120 people, and then screened in boutique cinemas in Akaroa and Christchurch.

Kororā was ultimately released online on 24th October 2021 on Radio New Zealand, (RNZ) and had over 25,000 views two weeks after its release.



This pilot project was made possible thanks to support from Environment Canterbury Regional Council (ECan) and the Rātā Foundation. This project received support from local Hāpū Te Rūnanga o Koukourarata, Orbica Ltd, the Department of Conservation, Banks Peninsula Conservation Trust, DOC, the Student Volunteer Army, and the International Antarctic Centre.



Other activities in our first year

Ētahi atu mahi o te tau i pahure

With limited funding, Blue Cradle was able to formulate its objectives publicly and make its work known across the community. Through outreach at public events, our organisation was able to get its message across Ōtautahi/Christchurch and wider Canterbury.

Estuary Fest

February 7th 2021

Blue Cradle participated in a community event at McCormacks Bay Reserve near Mount Pleasant Community Centre. Our tent and stand welcomed several dozen ocean enthusiasts curious about our work and activities. We will return in 2022!



An ocean of opportunity & IMPAC6

Seaweed March 2021

We began a bid to bring the 6th International Marine Protected Area



Congress (IMPAC6) to Aotearoa New Zealand. For this purpose, Blue Cradle hosted a panel, "An Ocean of Opportunity" and invited members of the ocean community to speak, including an introduction by Mayor Lianne Dalziel. The recording can be viewed on our Blue Cradle YouTube page, and more information about IMPAC6 can be found here: www.impact6.nz

Ocean literacy day

November 2020

An educational, immersive 'ocean literacy' day on the water was a wild success for Banks Peninsula children. Blue Cradle co-designed this event with Bush Farm Education, Kerepeti Paraone of Te Hāpū o Ngāti Wheke, and Black Cat Cruises. Together we were able to integrate Mātauranga Māori, ocean science, and

conservation for an extraordinary learning opportunity at Rāpaki marae and on a boat trip through Lyttelton Harbor. The children learned about Indigenous place names, penguin behaviour, marine mammal habitats and microplastics. We will explore a continuation of this format during Seaweed in 2022! Many thanks to all involved.



New Brighton beach clean

Seaweed March 2021

Co-led by Sustainable Coastlines, this community beach clean brought together several community groups from the Avon-Heathcote Estuary and New Brighton regions and broader Ōtautahi-Christchurch. We took part in this exciting event which was very well attended!



What's to come *Ngā mahi e heke mai nei*

Written in November 2021, this 2020 Annual Report End summarises what feels like happened a long time ago! As the 2020 financial year ended on March 31st 2021, Blue Cradle was already planning several activities. Below is a short summary of what is to expect in the 2021 Annual Report, due after March 31st 2022:

- » Our relationships with the Cawthron Institute, the Institute for Environmental Scientific Research (ESR), and Algalita South Pacific continues to grow in the form of research expeditions!
- » Working with Far Out Ocean Collective and Strannik Ocean Voyages, Blue Cradle will facilitate two in-situ data collection operations, looking for microplastics and marine invasive species, using a manta trawl and eDNA techniques. Along the way we will conduct outreach events with local communities to share our research in real time.
- » Blue Cradle will lead an ocean mural project in central Christchurch, and is planning ambitious ocean literacy projects across Canterbury and Aotearoa.
- » Our nonprofit continues to grow.. We have found new funders and sponsors!

Watch this space!

Our Supporters *Ngā kaitautoko*

OUR FIRST PARTNERS FOR 2020



OUR FOUNDATION YEAR SPONSORS FOR 2020



Financial Statements

Ngā tauāki pūtea

Blue Cradle Foundation

For the year ended 31 March 2021

Compilation Report to the Directors of Blue Cradle Foundation.

Scope

On the basis of information provided and in accordance with Service Engagement Standard 2 Compilation of Financial Information, we have compiled the financial statements of Blue Cradle Foundation for the year ended 31 March 2021.

These statements have been prepared in accordance with the accounting policies described in the Notes to these financial statements.

Responsibilities

The Trustees are solely responsible for the information contained in this financial report and have determined that the accounting policies used are appropriate to meet your needs and for the purpose that the financial statements were prepared.

The financial statements were prepared exclusively for your benefit. We do not accept responsibility to any other person for the contents of the financial statements.

No Audit or Review Engagement Undertaken

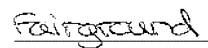
Our procedures use accounting expertise to undertake the compilation of the financial statements from information you provided. Our procedures do not include verification or validation procedures. No audit or review engagement has been performed and accordingly no assurance is expressed.

Independence

We have no involvement with Blue Cradle Foundation other than for the preparation of financial statements and management reports and offering advice based on the financial information provided.

Disclaimer

We have compiled these financial statements based on information provided which has not been subject to an audit or review engagement. Accordingly, we do not accept any responsibility for the reliability, accuracy or completeness of the compiled financial information contained in the financial statements. Nor do we accept any liability of any kind whatsoever, including liability by reason of negligence, to any person for losses incurred as a result of placing reliance on this financial report.



Fairground Ltd

Dated: 9 June 2021

Statement of Service Performance

Description of Entity's Outcomes

The Blue Cradle Foundation's main objective is to promote ocean science and conservation literacy education across Canterbury and beyond. In doing so it seeks grants, sponsors and donations and forms partnerships to promote ocean education.

Description and Quantification of the Entity's Outputs

In our first year of activity our Founder spent many volunteer hours and his own funds to set up a kaupapa (objective and vision), a website, and a Trust Board. Following this, two grants were awarded by the Rātā Foundation and ECAN, and anonymous donations made. This enabled Blue Cradle to work on a penguin monitoring and education project, delivering community education through a documentary, screened during Seaweed at the International Antarctic Centre, and in cinemas and potential purchase by national TV network. This first effort will likely generate some revenue, and some added visibility for Blue Cradle.

Through this project Blue Cradle has managed to gain significant visibility across the region. It is now finalizing a report and identifying new opportunities for collaboration including around microplastics research, biosecurity and further education opportunities across Canterbury and beyond.

Statement of Financial Performance

As at 31 March 2021

	NOTES	2021
Revenue		
Donations, fundraising and other similar revenue	1	4,154
Revenue from providing goods or services	1	10,655
Interest, dividends and other investment revenue	1	-
Other revenue	1	210
Total Revenue		15,020
Expenses		
Volunteer and employee related costs	2	305
Costs related to providing goods or service	2	13,462
Other expenses	2	335
Total Expenses		14,102

Statement of Financial Position

As at 31 March 2021

	NOTES	31 MAR 2021
Assets		
Current Assets		
Bank accounts and cash	3	4,263
Other Current Assets	3	1,000
Total Current Assets		5,263
Total Assets		5,263
Liabilities		
Current Liabilities		
Other current liabilities		4,345
Total Current Liabilities		4,345
Total Liabilities		4,345
Total Assets less Total Liabilities (Net Assets)		918
Accumulated Funds		
Accumulated surpluses or (deficits)	4	918
Total Accumulated Funds		918

Statement of Changes in Equity

For the year ended 31 March 2021

	2021
Equity	
Accumulated Funds	
Opening Balance	-
Increases	
Trustees Income for the Period	918
Total Increases	918
Total Accumulated Funds	918
Total Equity	918

Statement of Cash Flows

For the year ended 31 March 2021

	2021
Cash Flows from Operating Activities	
Donations, fundraising and other similar receipts	4,154
Receipts from providing goods or services	10,655
Interest, dividends and other investment receipts	-
Cash receipts from other operating activities	210
Payments to suppliers and employees	(14,102)
Total Cash Flows from Operating Activities	918
Cash Flows from Investing and Financing Activities	
Cash Flows from Other Investing and Financing Activities	3,345
Total Cash Flows from Investing and Financing Activities	3,345
Net Increase/ (Decrease) in Cash	4,263
Cash Balances	
Cash and cash equivalents at end of period	4,263
Net change in cash for period	4,263

Statement of Accounting Policies

For the year ended 31 March 2021

Basis of Preparation

The entity has elected to apply PBE SFR-A (NFP) Public Benefit Entity Simple Format Reporting - Accrual (Not-For-Profit) on the basis that it does not have public accountability and has total annual expenses equal to or less than \$2,000,000. All transactions in the Performance Report are reported using the accrual basis of accounting. The Performance Report is prepared under the assumption that the entity will continue to operate in the foreseeable future.

Goods and Services Tax (GST)

The entity is not registered for GST. Therefore all amounts are stated inclusive of GST (if any).

Income Tax

Blue Cradle Foundation is wholly exempt from New Zealand income tax having fully complied with all statutory conditions for these exemptions.

Bank Accounts and Cash

Bank accounts and cash in the Statement of Cash Flows comprise cash balances and bank balances (including short term deposits) with original maturities of 90 days or less.

Changes in Accounting Policies

This is the first year of operation, accounting policies have been applied for the first time.

Notes to the Performance Report

For the year ended 31 March 2021

2021

1. Analysis of Revenue

Donations, fundraising and other similar revenue	
Donations Received	4,154
Total Donations, fundraising and other similar revenue	4,154
Revenue from providing goods or services	
Grants Received	10,655
Total Revenue from providing goods or services	10,655
Interest, dividends and other investment revenue	
Interest Income	-
Total Interest, dividends and other investment revenue	-
Other revenue	
Other Revenue	210
Total Other revenue	210

2021

2. Analysis of Expenses

Volunteer and employee related costs	
Travel - National	305
Total Volunteer and employee related costs	305
Costs related to providing goods or services	
Equipment Hire	177
Film Production Expenses	460
Freight & Courier	45
General Expenses	87
Materials	76
Merchandise Purchases	2,828
Subcontractors	8,300
Website Expenses	1,490
Total Costs related to providing goods or services	13,462
Other expenses	
Consulting & Accounting	335
Total Other expenses	335

2021

3. Analysis of Assets

Bank accounts and cash	
BNZ Account	4,263
Total Bank accounts and cash	4,263
Debtors and prepayments	
Loan - Trustees	1,000
Total Debtors and prepayments	1,000

2021

4. Accumulated Funds

Accumulated Funds	
Accumulated surpluses or (deficits)	918
Total Accumulated Funds	918
Total Accumulated Funds	918

5. Commitments

There are no commitments as at 31 March 2021.

6. Contingent Liabilities and Guarantees

There are no contingent liabilities or guarantees as at 31 March 2021.

2021

7. Related Parties

Receivables	
James Alexander Nikitine - Trustee	1,000
Total Receivables	1,000

8. Events After the Balance Date

There were no events that have occurred after the balance date that would have a material impact on the Performance Report.


9. Ability to Continue Operating

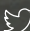
The entity will continue to operate for the foreseeable future.




bluecradle

www.bluecradle.org

 @bluecradlenz

 @blue_cradle

 @bluecradlenz